



PROJECT GUIDE

HOW TO INSTALL ALLURE GRIPSTRIP FLOORING



This easy-to-use guide will show you just how simple it is to install a beautiful new floor in your home. And because you're using Allure GripStrip flooring, each free-floating plank attaches securely to the next, so there's no need for messy glue or an underlayment.



TOOLS

- Tape measure
- Heavy duty cutter
- Work gloves
- Extendible floor roller
- Utility knife
- Ruler

MATERIALS

- Self-levelling underlayment
- Latex primer
- Allure GripStrip flooring



PROJECT GUIDE

HOW TO INSTALL ALLURE GRIPSTRIP FLOORING

STEP 1

ACCLIMATE PLANKS



Begin by **laying out your unopened boxes of planks** in the room where they will be installed at least two days before you start, so they can acclimate to the temperature and humidity.

NOTE: Allure GripStrip is for interior installations and only in temperature controlled environments. Allure GripStrip should not be installed in an environment where the temperature is allowed to go below 13°C or above 30°C.

STEP 2

PREP SUBFLOOR



Allure GripStrip flooring can be installed over most existing floors, but first **make sure the subfloor is smooth, flat, dry, clean and solid.**



Remove any carpet staples or adhesive residue, check for moisture, fill any large holes and ensure screws are countersunk.



Sand flat any uneven spots over 5 millimeters. If you are replacing any previously installed vinyl flooring, never begin sanding it before consulting a professional beforehand.



PROJECT GUIDE

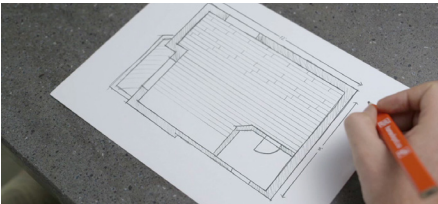
HOW TO INSTALL ALLURE GRIPSTRIP FLOORING

STEP 3

PLAN FLOORING LAYOUT



You'll need to determine how the entire floor will lay out in order to ensure the planks on either side of the room are similar in size. Begin by **measuring the length of the room and divide by the length (long side) of the Allure plank you are installing**. If the number is less than 12" you need to cut your first plank accordingly to avoid planks less than 12" on the opposite side of the room.



Also **measure the width of the room**. Divide the width of the room by the width of the Allure plank (short side). If the number is less than half the width of the plank, then your first row needs to be cut length-wise on both the first and last rows (they should be the same width on the first and last rows). Avoid having a row of less than half the width of the plank being installed.

STEP 4

SCORE AND SNAP TO CUT



To cut a plank simply **measure and mark the plank**, then using your straight edge and utility knife, score the plank and snap.



PROJECT GUIDE

HOW TO INSTALL ALLURE GRIPSTRIP FLOORING

STEP 5

BEGIN INSTALLING ROWS



Starting from a corner, **install the first row with the under-edge facing away from the wall**, allowing a gap of at least 1/4" for expansion, which should be covered by moulding. Trim off the long side top over-edge facing the wall. Be sure to get the entire length of the first row as well as the over-edge on the short side of the first plank.

STEP 6

CONNECT AT 45° ANGLE



When connecting two planks, **angle the second plank into the corresponding edge at a 45-degree angle**. The over-edge always goes on top of the under-edge. Starting at one end of the plank, use one hand to hold the plank and the other to roll the edge into place.





PROJECT GUIDE

HOW TO INSTALL ALLURE GRIPSTRIP FLOORING

STEP 7

KEEP SEAMS BONDED AND TIGHT



Once proper fit is determined, **use a hand roller directly on the joined seam and exert as much pressure as possible** to bond the seams with no visible gap between planks. If your seam isn't tight, prior to hand rolling, slowly lift the top plank away and re-attach correctly.



STEP 8

START 2ND ROW



Start the second row with a plank cut at about 2/3 length. **To cut a plank, simply measure, mark, score and snap.** The over-edge butts up to the first row. Again, get one corner of the plank started tightly against the other and roll the plank tightly into place on a 45-degree angle.





PROJECT GUIDE

HOW TO INSTALL ALLURE GRIPSTRIP FLOORING

STEP 9

STAGGER SEAMS AND END JOINTS



You'll also want to **stagger the seams** or end joints at least 6" apart for a more natural looking appearance.

STEP 10

UNDERCUT DOOR CASINGS

To ensure your flooring will fit underneath the door casing and not expose a 1/4" expansion space, **remove the under-edge of a plank**. Place a handsaw on the plank and cut the door casing to the height of the plank.

STEP 11

FINISH WITH A FLOOR ROLLER



After installation is completed, we recommend **rolling the seams with a floor roller** in both directions to insure bonding of both adhesive edges.



GET STARTED AND VISIT THE HOME DEPOT TODAY

Visit homedepot.ca for more great projects.